

## Params

In *params* menu (fig. 1) can be set some other parameters as parameter *B* that is common for all quantifiers (as written in previous section) and *handling of missing values*.

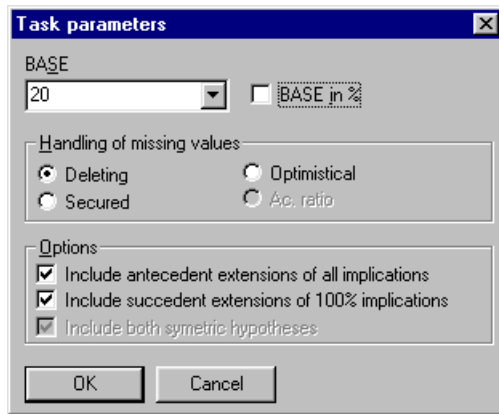


Figure 1: Parameters

## Parameter B

Parameter *B* can be set in two ways. As an absolute number or as a percentage. The result is that if set as an absolute number then the final hypotheses will have number of objects satisfying both antecedent and succedent greater or equal to number *B*.

If the parameter *B* is set as a percentage then only hypotheses with number of objects (satisfying both antecedent and succedent) greater or equal then *B* percent of all objects in data matrix will be displayed.

## Handling of missing values

This selection gives user the possibility to decide what to do with missing values in the matrix. It is recommended to use the default selection – *deleting*. Other possibilities are *optimistical* and *secured*.